

EMERGENCIES

what3words is a free App that has given every 3metre square in the world a unique 3 word address. Simply download it and it will give you the three word address of where you are or where you want to go. These 3 words are fixed and emergency services use the system. This is particularly helpful for Bovisand Park Private Estate where satnav often takes people to the wrong side of the valley.

The what3words for the Main Gate are: "VINES.LIMP.BOUNTY", the Emergency services however use the following three words which is for a spot just inside the estate: "GOLD.WIRE.RESORT". By using the app you can give the three words for your exact location within the site.

All emergency services have the code for the Key Safe on the Main Gate.

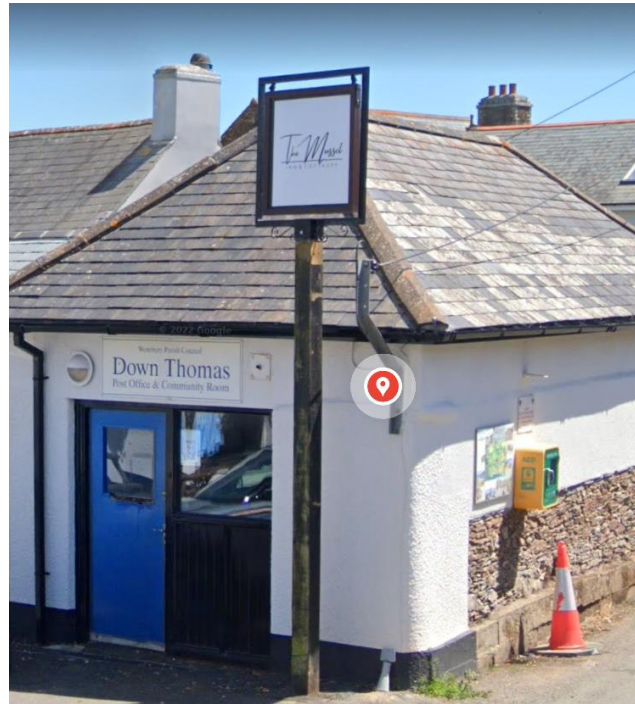
A defibrillator is available on the site and is located on the wall outside of the Main Office which is next to the toilet block and café at the North end of the site.



Other defibrillators in the area can be found on the wall of the Cliff Edge Café on the other side of Bovisand Bay,



and outside the Post Office and Community Room, opposite the Mussel Inn in Down Thomas.



Reporting an emergency?

POLICE

Call 999 - If you are reporting a crime that is in progress or if someone is in immediate danger.

For example:

- a serious offence is in progress or has just been committed.
- someone is in immediate danger or harm.
- property is in danger of being damaged.
- a serious disruption to the public is likely.

Call 101 - for non-emergency enquiries.

MEDICAL EMERGENCIES

At some point, most people will either witness or be involved in an accident or experience a medical emergency. Knowing what to do next and who to call can potentially save lives.

Life-threatening emergencies

Call 999 in a medical emergency. This is when someone is seriously ill or injured and their life is at risk.

Medical emergencies can include:

- loss of consciousness
- an acute confused state
- fits that are not stopping
- chest pain
- breathing difficulties
- severe bleeding that cannot be stopped
- severe allergic reactions
- severe burns or scalds

Call 999 immediately if you or someone else is having a heart attack or stroke. Every second counts with these conditions.

Also call 999 if you think someone has had a major trauma, such as after a serious road traffic accident, a stabbing, a shooting, a fall from height, or a serious head injury.

Call 111 if in doubt. NHS 111 can help if you need urgent medical help or you're not sure what to do. They will ask questions about your symptoms so you get the help you need.

If you need to go to an Accident & Emergency Department, NHS 111 will book an arrival time. This might mean you spend less time in Accident & Emergency Department. This also helps with social distancing.

You can get help from 111.nhs.uk or call 111. It's available 24 hours a day, 7 days a week.

FIRE AND RESCUE

Call 999 - If you witness a fire and ask for the Fire Service.

Fire hydrants are positioned outside chalets 60 and 81, on the road below 43, in the main car park below 10 and opposite the Workshop on the grass.

COASTGUARD

Call 999 - If you witness an incident on the beach, coast or sea and ask for the Coastguard.

OTHER EMERGENCIES

In the event that something happens on the estate that necessitates urgent action which cannot be resolved by contacting emergency services, contact the Company Office near the gate, call 01752 862813 or email bplimitedmail@gmail.com, if the office is closed, email bplwebmail@gmail.com. Emergency contact made through bplwebmail@gmail.com should only be made for site issues and not for issues that relate to individual chalets.